

### Payment

Mandarin Camp

- Session 1  \$310
- Session 2  \$310
- Session 3  \$280

LIT Camp

- Session 1  \$360
- Session 2  \$360
- Session 3  \$330

### Discounts

- Yat San Student  -\$20
- Early Bird (before March 29,2010)  -\$20
- Multiple Sessions  -\$10
- Multiple Siblings  -\$10

*Refund Policy: No refund after July 1, 2010.  
\$30 administration fee will apply.*

### Waiver

I, parent/guardian, on behalf of myself, my family and my child, \_\_\_\_\_, hereby release and covenant to hold harmless to Yat San Chinese School, Yat San Parents' Association, agents, contractors, volunteers, and administrative staff of and from any and all actions, claims, and damages for personal injuries and disabilities that I have sustained and may have incurred as a result of participation in this summer camp and related activities.

\_\_\_\_\_  
Name of Parent/Guardian

\_\_\_\_\_  
Signature

### For Office Use Only

Received By:

Date:

Amount:

Cheque No.:

Remarks:

detach and hand in

### METHODS OF APPLICATION

#### Return application form to:

Yat San Chinese School located at  
Brebeuf College School, 211 Steeles Ave.  
East (Fridays 6-8 pm)

#### Mail application to:

P.O. Box 87674  
298 John St., Thornhill  
ON L3T 7R4

#### Apply Online:

[www.yatsan.org](http://www.yatsan.org)

Full payment is required with application. Cheques to be made payable to **Yat San Chinese School**.

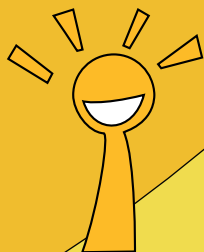
Limited spaces, first-come-first-serve basis. Program subject to change if necessary

### TYPICAL SCHEDULE

7:30 – 8:30am	Before camp care
8:30 – 9:00am	Welcome & Sign in
9:00 – 10:30am	Activity 1
10:30 – 10:45am	Break
10:45 – 12:00 noon	Activity 2
12:00 – 1:00pm	Lunch
1:00 – 2:15pm	Mandarin/Enriched Math
2:15 – 2:30pm	Break
2:30 – 3:45pm	Enriched Math/Mandarin
4:00 – 6:00pm	After Camp Care

### INQUIRY HOTLINE

**416.877.8901**



**REGISTER NOW** and  
experience a summer of  
fun and learning!

領袖訓練營 ages 13-17

普通話日營 ages 6-13

**LIT & MANDARIN**

**SUMMER DAY  
CAMP 2010**

#### Location:

Thornlea Secondary School  
8075 Bayview Avenue  
Thornhill (Bayview/John)

#### Highlights Include:



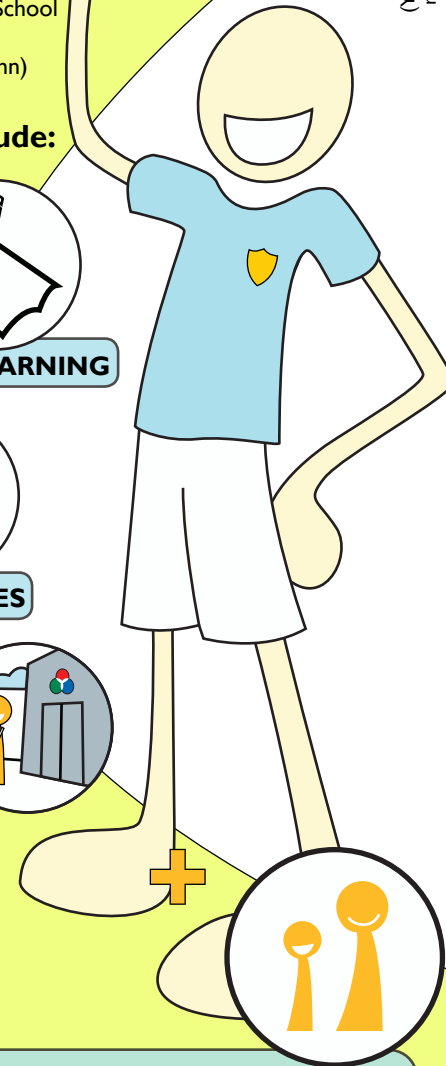
**ACADEMIC LEARNING**



**FUN ACTIVITIES**



**DAY TRIPS**



Yat San Chinese School is a Ontario  
registered non-profit organization

### LIT PROGRAM

Specifically oriented towards students between the ages 13 and 17, the Yat San LIT program seeks to promote leadership training in today's growing youth through a fun and educative day camp experience.

*(see details inside!)*

## Summer Camp General Information

Session 1	July 5 to July 16
Session 2	July 19 to July 30
Session 3	Aug 3 to Aug 13

### Camp Fees

<b>Mandarin Camp</b>	
Session 1	\$310
Session 2	\$310
Session 3	\$280
<b>LIT Camp</b>	
Session 1	\$360
Session 2	\$360
Session 3	\$330

## SUMMER CAMP HIGHLIGHT DETAILS



### ACADEMIC LEARNING

This summer day camp engages campers in learning **Mandarin**, as well as **Enriched Math** in a fun-filled environment.

Yat San especially welcomes children with *no* Mandarin background to start learning the language of the century!



### ACTIVITIES

Upon registration, campers have the choice of two activity electives in addition to activities that are part of the main schedule

These activities include:

- Basketball
- Chinese Crafts & Calligraphy
- Music/Choir
- Softball
- Wushu



### OTHER ACTIVITIES

In addition to the electives, activities included in every session are badminton, bowling and swimming. New to this year is a bowling clinic run by professional coaches.



### DAY TRIPS

Yat San Summer Camp also includes one day outing trip with each session to allow campers a chance to experience something different from the typical camp schedule.



### LIT (LEADERS-IN-TRAINING) PROGRAM

LITs will have the opportunity to work directly under experienced camp mentors, as well as with campers to allow the best possible learning experience.

Not only will LITs learn to be qualified leaders, but they will also get a chance to learn Mandarin, one of the fastest growing languages in society. They will also take part in First-Aid Training and learn to strengthen their English Public Speaking skills.

LITs will be presented with a certificate stating the successful completion of the program, 20 hours of voluntary community service per session, as well as a First-Aid Certificate upon passing the examination.

## OTHER CAMP HIGHLIGHTS

- Free T-shirt for each camper per session
- Friday pizza lunch (\$4 per student)
- Catered lunch package (Optional \$5 - \$7)
- Before and after camp care service available for additional \$10/day (7:30-8:30am, 4-6pm)
- Session end celebration



領袖訓練營 LIT &  
普通話日營 MANDARIN

## SUMMER DAY CAMP 2010

## Application Form:

### General Information

Name \_\_\_\_\_

Age \_\_\_\_\_ Gender \_\_\_\_\_

Address \_\_\_\_\_

Postal Code \_\_\_\_\_

Emergency Contact: \_\_\_\_\_

Phone No. 1/ \_\_\_\_\_

2/ \_\_\_\_\_

Email \_\_\_\_\_

Allergy (if any) \_\_\_\_\_

### Level of Mandarin

Beginner

Intermediate

Advanced

### Activity Selection (for mandarin camp only)

list in order of preference from 1 to 5, subject to enrollment

	Session 1	Session 2	Session 3
Basketball			
Chinese Crafts & Calligraphy			
Music/Choir			
Softball			
Wushu (kungfu)			

note: Badminton, swimming and bowling included for all

detach and hand in